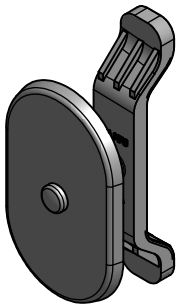
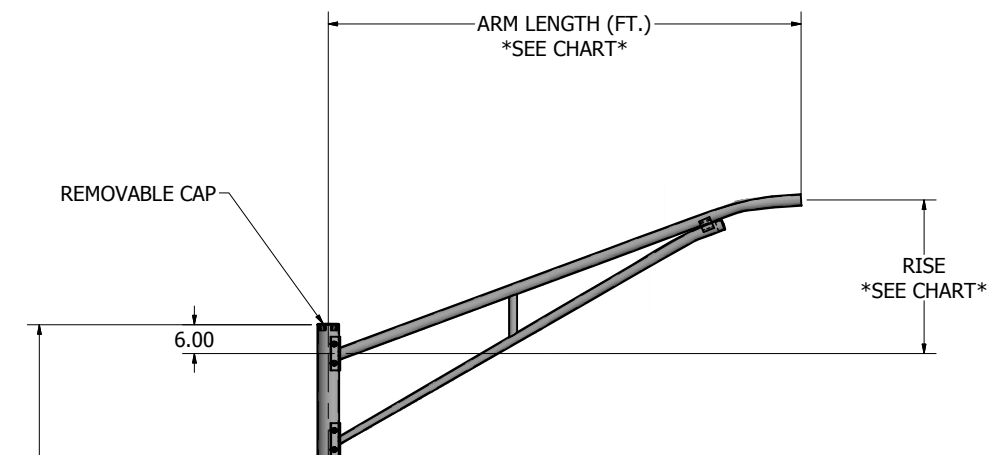
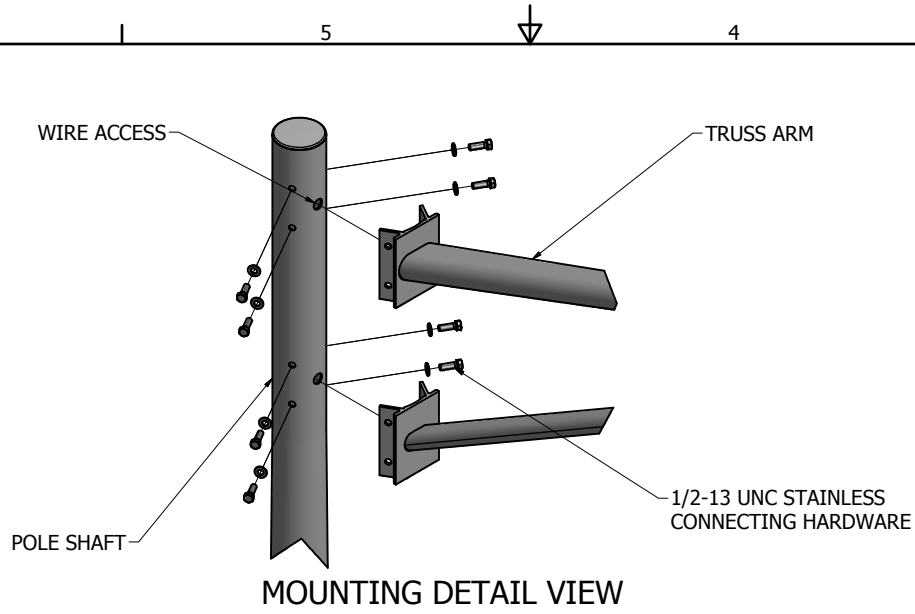
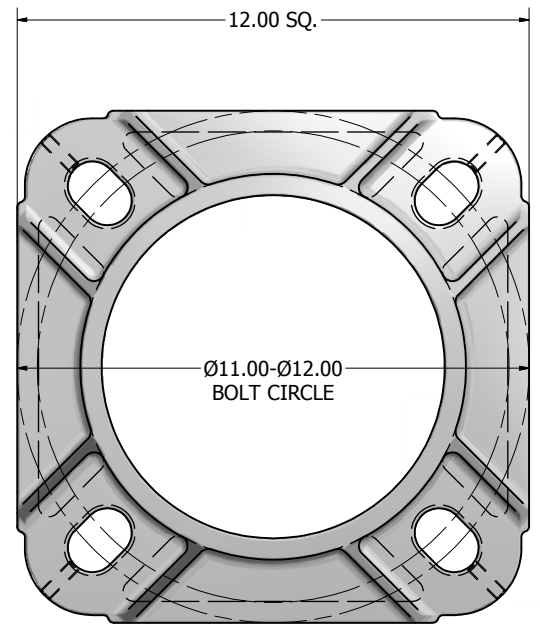


8		7			
POLE SHAFT SPECIFICATIONS					
1.	SHAFTS ARE ONE SECTION DESIGN FABRICATED FROM 6063 T6 ALUMINUM EXTRUSION-SPUN TAPERED.				
2.	BASE CASTING IS 356 T6 ALUMINUM. THE SHAFT TELESOPES INTO THE BASE CASTING AND IS CIRCUMFERENTIALLY WELDED TOP AND BOTTOM.				
3.	ANCHOR BOLTS ARE "L" FORMED RODS HAVING A MINIMUM YIELD STRENGTH OF 55,000 P.S.I. FABRICATED FROM ASTM F1554 GR. 55 THEN PARTIALLY GALVANIZED PER ASTM A153 SPECIFICATIONS AND FURNISHED COMPLETE WITH 2 HEX NUTS AND 2 FLAT WASHERS.				
4.	POLES SHALL HAVE A POLYESTER POWDER COAT FINISH IN A STANDARD COLOR.				
POLE DIMENSIONS					
POLE HGT. (FT.)		TOP DIA. (IN.)		BOTTOM DIA. (IN.)	
33'		4.50		8.00	
				GAGE	
				SEE CHART	
				MTG. HGT. (FT.)	
				35'	
BASE PLATE DIMENSIONS					
BOLT CIRCLE (IN.)		BASE PLATE DIM. (IN.)		BOLT HOLE (IN.)	
11.00-12.00		12.00 SQ		1.13	
				1.00	
ANCHOR BOLT DIMENSIONS					
ANCHOR BOLT DIA. (IN.)			ANCHOR BOLT LENGTH (IN.)		
1.00			40.00		
ALLOWABLE WIND LOADING (SQ. FT.) PER ARM					
WIND*			100 MPH		
EPA			2.0		

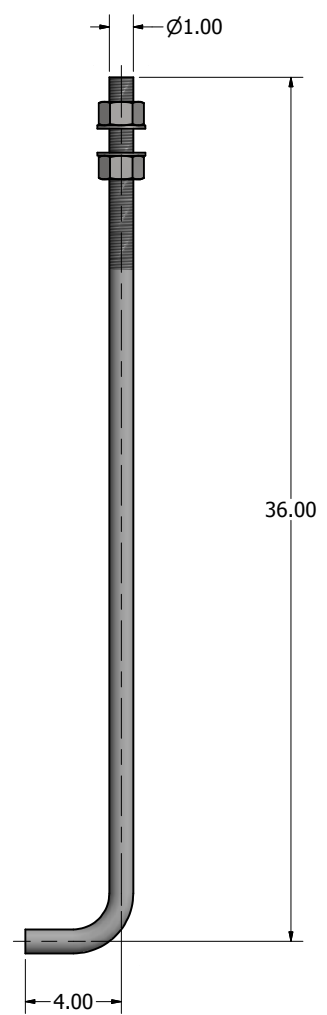
\*WITH 1.3 GUST FACTOR




3.00 X 5.00 HAND HOLE COVER



12.00 X 12.00 X 3.50 THK. BASE CASTING



Ø1.00 X 40.00 ANCHOR BOLT



P.O. Box 340  
Eastpointe, MI 48021  
P: (586) 771-4610 | F: (586) 771-5527  
www.lytepoles.com

a DWM company

DRAWN: L. GRUNIS	4/27/2018
CHECKED:	
REVISION:	DATE:
APPROVED:	
QUOTE:	
S.O.#	
REF:	SCALE: NONE

SOME GEOGRAPHICAL AREAS HAVE SPECIAL WIND CONDITIONS THAT CAN CREATE WIND INDUCED VIBRATIONS CAUSING A FATIGUE PROBLEM. NO METHOD HAS YET BEEN FOUND FOR PREDICTING DESTRUCTIVE LIGHTING POLE VIBRATION. THESE CONDITIONS ARE UNIQUE AND CANNOT BE GUARANTEED AGAINST, AND ARE THE RESPONSIBILITY OF A LOCAL SITE ENGINEER.

TITLE:

CATALOG:

DWG NO: 405-2-35108-405-2-35115

SIZE	D	SHEET 1	OF 1
------	---	---------	------

180°

270°

90°

0°

HANDHOLE